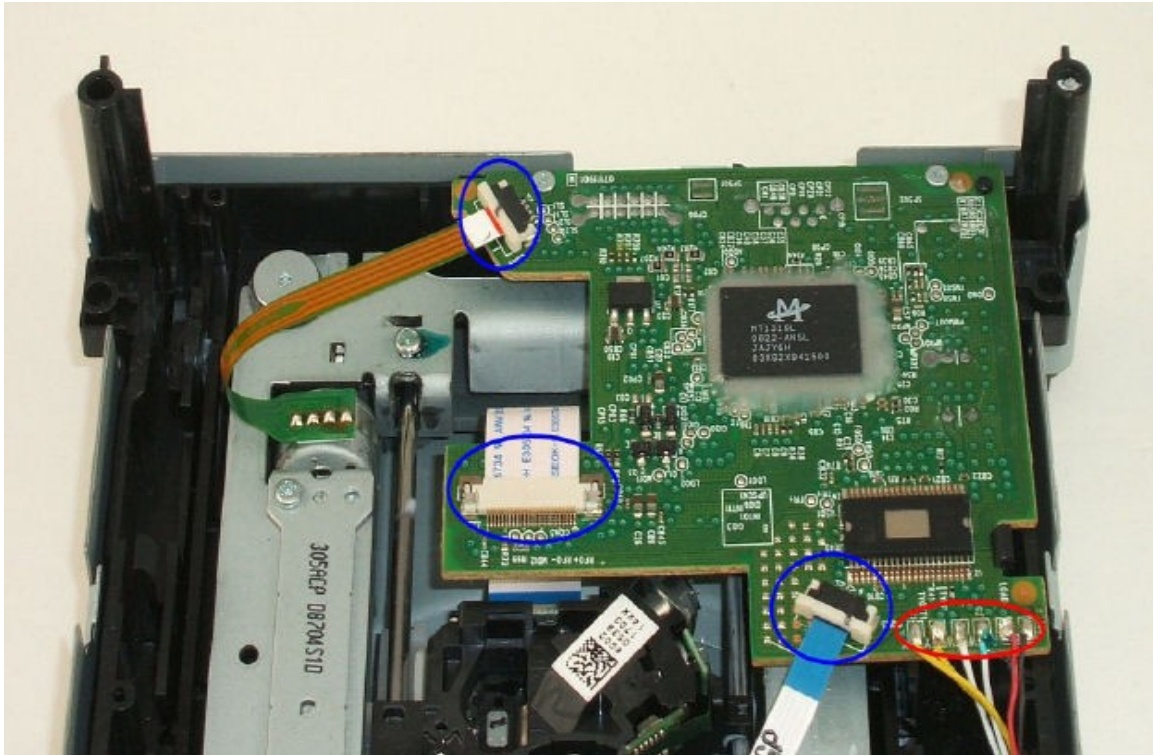


DG-16D2S LiteOn PCB Transfer Notes



The wires circled in blue simply plug out. The wires circled in red (6 wires on DG-16D2S drive) must be de-soldered to remove the old board. The new board must be removed from the new drive (using the same method). The old board must then be soldered into the new drive. You do not need any solder to perform this task. You can use the solder that was left on the board when you removed the wires.

To order please go to <http://www.mygameparts.com>

You can also send us your old drive and we will perform the task above for \$10.00 plus the cost of the new drive.