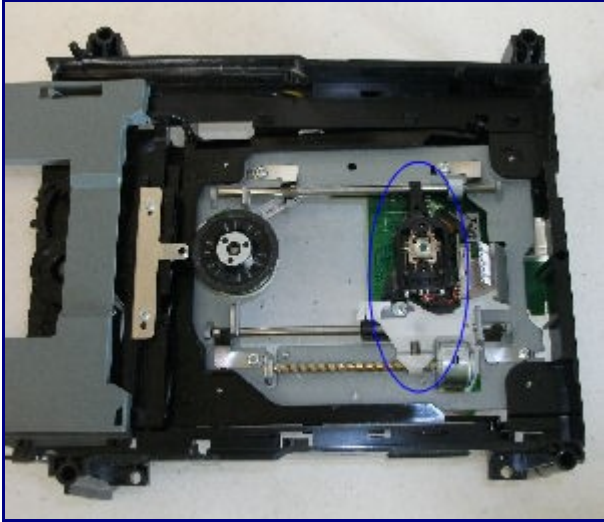




Step 1. Remove 4 screws at bottom of DVD Drive (circled in blue).



Step 2. Remove Bottom Cover



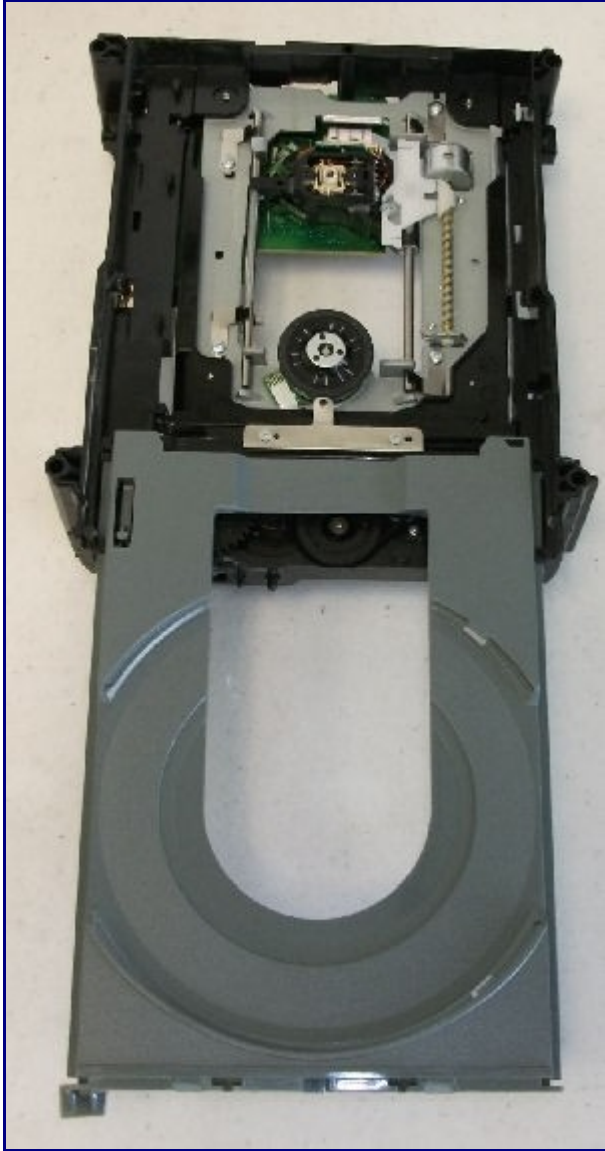
Step 3. Make sure laser is in this position.



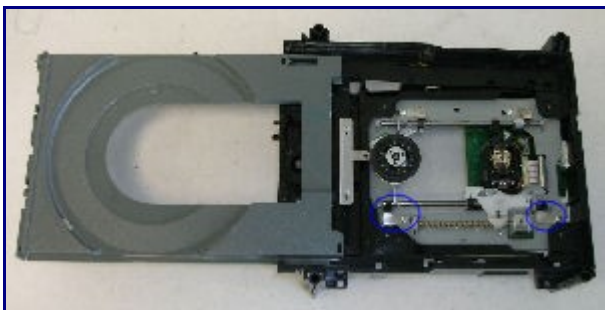
Step 4. Push this part to the left and the tray will pop out.



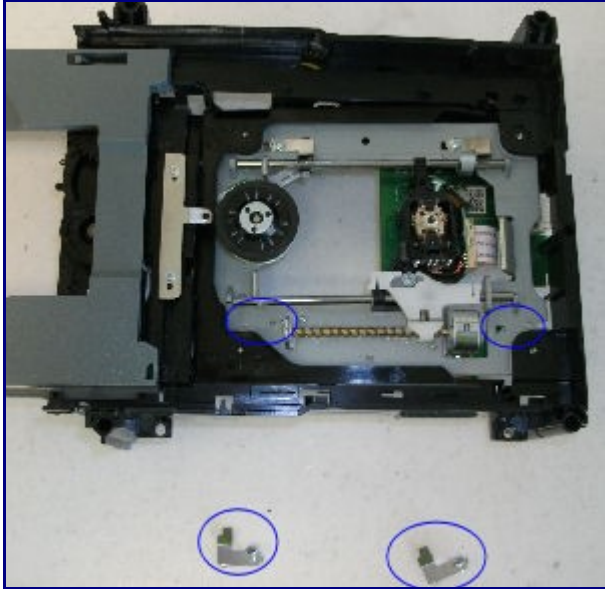
Step 5. This is how it will look once the tray is released.



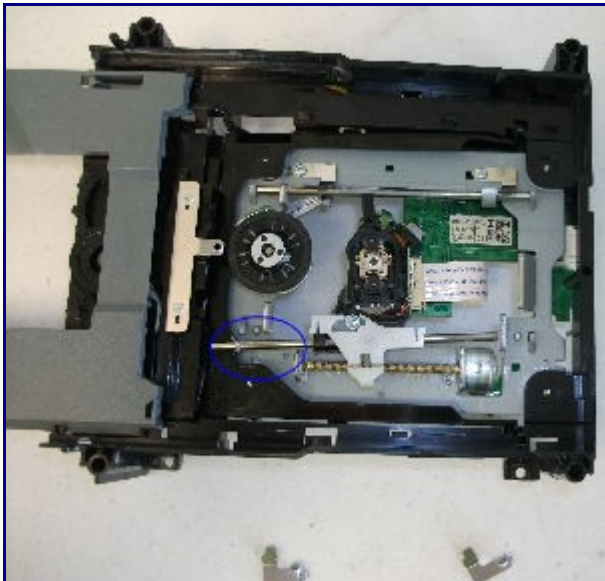
Step 6. Pull the tray out as far as you can, but do not remove it.



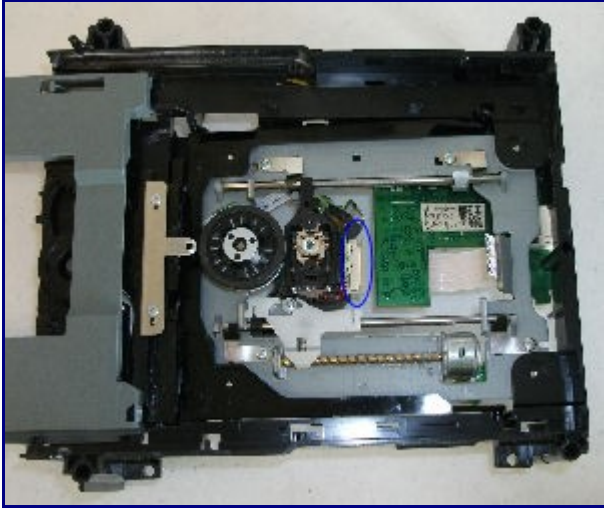
Step 7. Remove two screws holding rod clips in place (circled in blue).



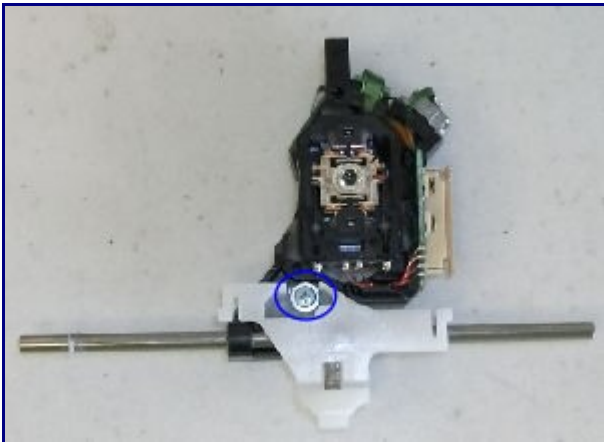
Step 8. Remove screws and clips.



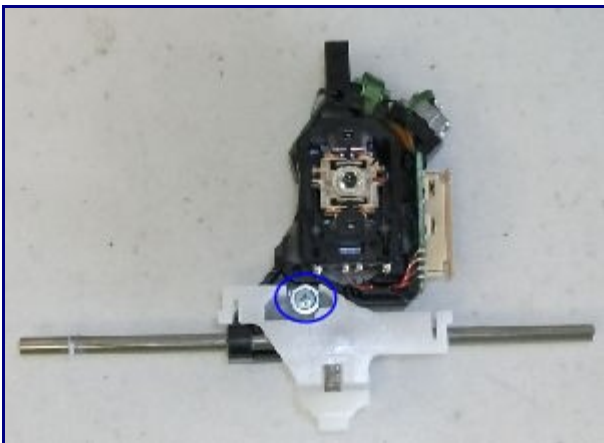
Step 9. Lift this side of the laser rod to release the laser (this is why it's important to make sure the laser is in position, see step 3).



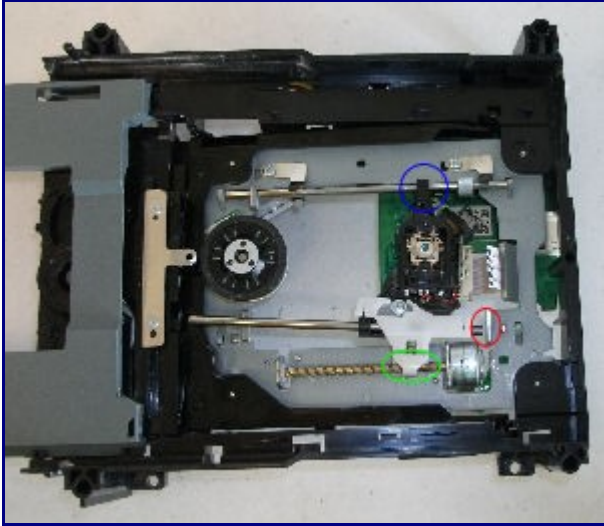
Step 10. Release laser cable latch, remove laser.



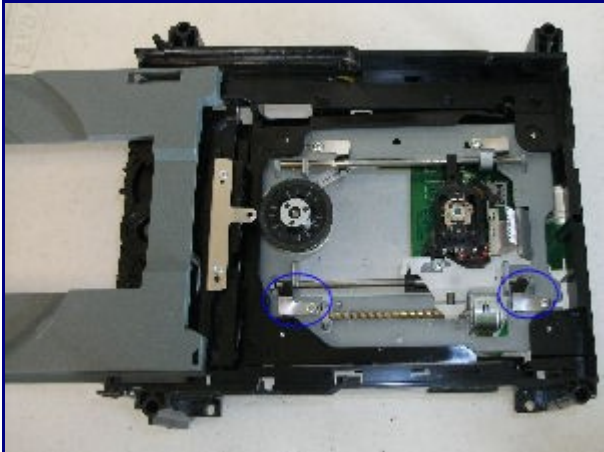
Step 11. Remove silver laser arm screw (circled in blue) and laser arm from laser. Remove rail from laser.



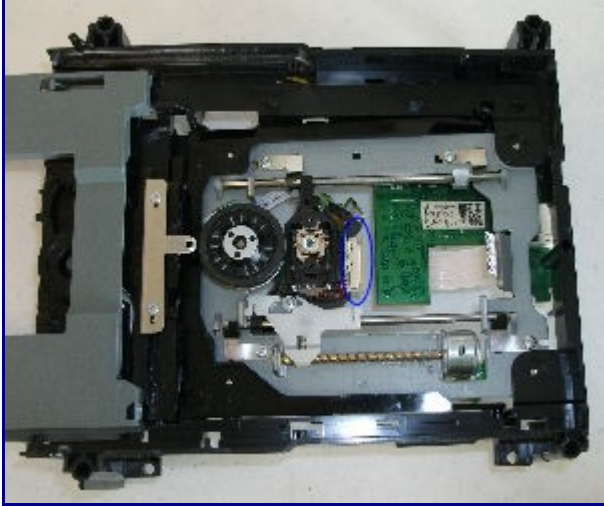
Step 12. Install laser arm into new laser -- **BE VERY CAREFUL NOT TO OVERTIGHTEN THIS SCREW OR IT WILL STRIP THE HOLE IN THE LASER!!!!**



Step 13. Reinstall laser into drive. Start with the top of the laser (circled in blue) and angle it in so that you can slide the right side of the rail in place through the hole (circled in red), then snap the left side in place. Make sure the laser arm gear is on the worm gear motor (circled in green).



Step 14. Reinstall both laser rod latches (circled in blue).



Step 15. Slide laser all the way to the left, Open laser ribbon latch (circled in blue).



Step 16. Install laser ribbon cable. **CLOSE LATCH!**



Step 17. Push tray back in place.



Step 18. Flip the drive over and make sure no ribbon cables have slipped out.

Step 19. Put top and bottom back on drive and reinstall 4 screws you removed in step 1.

That's it! Plug the drive back into your Xbox 360 and it should be a go! If you stripped the screw in step 12, you can use crazy glue, epoxy, or find a wider screw at a hardware store. If you do not, the white arm will eventually come off and the drive will make ugly grinding noises and stop working.